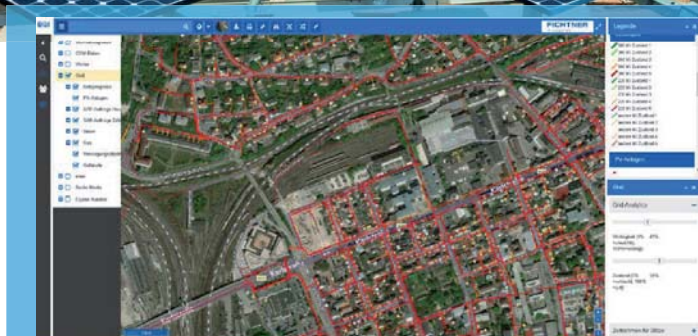


# BGI MAINTAIN

Business Geo Intelligence and maintenance management



Optimization of operational and strategic maintenance processes through Business Geo Intelligence modules

# BGI MAINTAIN

BGI MAINTAIN optimizes operational and strategic maintenance processes in the supply and transport industry, offering a complete analysis by (geo-) visualizing all relevant information needed for maintenance, inspection, repair and improvement of facilities. The combination of technical data from sources such as the GIS and SAP PM / MM / EAM with external services and business information as well as valuations enable a condition-based and maintenance-oriented view of the equipment infrastructure and identify synergies in process optimization.

## OPTIMIZING OPERATIONAL PROCESSES

- Which important equipment, infrastructures, facilities or customers are affected by a disruption?
- Where are the (SAP) work orders geographically?
- How can the necessary on-site operations be optimized ("traveling salesman", real-time traffic data)?
- Where are critical weaknesses?
- Where are other maintenance jobs in the area for bundling work orders?
- How can regular inspection and Maintenance intervals be optimized?
- How does an incident affect the operational planning of the service team?

## OPTIMIZING STRATEGIC PROCESSES

- Which asset, at which specific location, displays noticeable failure rates?
- How important are these plants?
- What rehabilitation need exists for short / medium / long-term measures?
- How can the efficiency of maintenance measures be increased?
- How can maintenance management be integrated with other processes and systems?



BGI MAINTAIN is a modern, modular Web-GIS framework from the proven Fichtner solution series »Business Geo Intelligence«. It provides a flexible set of combinable features, data and services to meet customer needs and is in use at numerous well-known companies.



## INTEGRATED MAINTENANCE MANAGEMENT

Systems, equipment, spare parts locations and service units can be displayed and analyzed according to defined attributes, including a turnaround list. In interaction with your master system, generated information, results and optimization calculations can be exchanged and integrated into a cockpit to be used by the user.

## ADDED VALUE THROUGH CONSULTING EXPERTISE

To support operational and rehabilitation strategies, we offer a unique combination of software and consulting services. When assessing the condition, importance and cost of facilities, infrastructures and networks, we contribute our experience on demand for assessment, budget planning, change and spare parts management and maintenance audits.

## IMPLEMENTATION OF IoT SCENARIOS

BGI MAINTAIN can be expanded with other solution modules from the BGI solution series into a condition-based and predictive maintenance management. For scenarios around the maintenance management we were honored by the SAP with the IoT Challenge Winner Award and by Microsoft with the Country Partner Award.

For further information visit us at [www.fit.fichtner.de](http://www.fit.fichtner.de).

## ABOUT FICHTNER IT CONSULTING GMBH

FIT is the IT competence center of the Fichtner Group with some 1500 employees in over 60 countries. The Fichtner Group has been established in 1922 and is family-owned ever since. We design and implement information logistics for technical networks, assets and infrastructure. We combine industry-specific knowledge with process know-how and state-of-the-art technological expertise to deliver innovative and economic solutions for your success. We extract, structure, link, process and present your (geo-referenced) data to provide efficient and effective solutions.